



Pocket dynamo

>> **Words** Andrew Brasier >> **Photography** Mark Taylor

This single-storey design will provide a genuine allure for budget homebuyers.

For a start, it is keenly priced and has a slim shape suitable for smaller and generally less expensive housing blocks.

Secondly, the Allure packs a lot into its confines, including four bedrooms, a choice of living spaces and an indoor/outdoor dimension.

Thirdly, this Homebuyers Centre product has contemporary features and fittings normally associated with more expensive designs, including a smart, sharp facade and a stylish kitchen.

The latter is distinguished by an island servery with breakfast bar, a walk-in pantry and 900mm stainless-steel appliances, including an underbench oven, five-burner cooktop and canopy rangehood, as displayed.

Reconstituted-stone benchtops, as displayed, supply more wow factor in the kitchen.

Fans of indoor/outdoor living will appreciate the sliding-door access from the meals area to a covered outdoor area.

And when it comes to sleeping areas, the Allure offers some very nice touches.

The main bedroom has more than sufficient space, including two walk-in robes to meet the needs of a couple. They are located behind the island wall to the bedhead area.

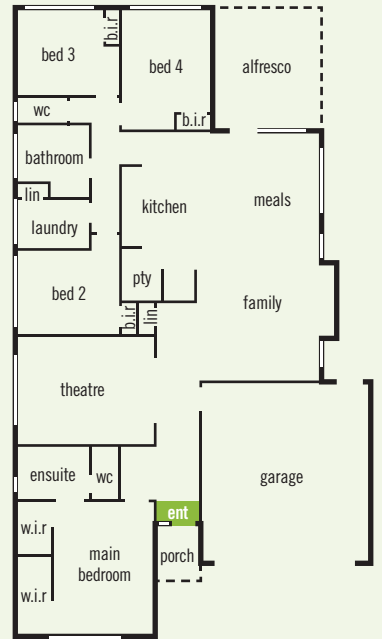
Importantly, this sleeping area is zoned away from the three minor bedrooms to ensure privacy for its occupants.

The three minor bedrooms are a good size and are fitted with built-in robes. They share a separate toilet and a bathroom with a single vanity.

On the outside, the Allure is decidedly modern in appearance.

As displayed, its facade comprises feature brick, rendered brick and a combination of horizontal and vertical windows.

In and out
Take your entertaining outside to the alfresco zone



Central station

A relaxed vibe fills the casual family/meals/kitchen zone (left)

Ensuite surrender

Enjoy the luxury of the main-bedroom ensuite (below middle)

Make yourself comfortable

The main bedroom provides a private sanctuary (below, far left)

Allure

Builder	Homebuyers Centre (a division of ABN Group)
Price	From \$168,600; as displayed \$237,407
Location	Woodcutters Grove, Epping
Melway	182 B6
Open	Sat-Wed, noon-5pm
Phone	131 751
Website	homebuyers.com.au

Essentials

Size	232.88sqm, including porch, alfresco zone and garage
Width	12.47m
Depth	21.71m
Bedrooms	Four
Bathrooms	Two
Garage	36.49sqm

Features

- > Connections
- > Ducted gas heating
- > Reconstituted-stone benchtops (optional)
- > 900mm stainless-steel appliances (optional; 600mm standard)
- > Two walk-in robes in main bedroom
- > Floating timber flooring to main passage and communal living areas (optional)
- > Double garage
- > Facade (optional)

